

A VISUAL GUIDE IS AVAILABLE FOR THIS PERFORMANCE.

It is available on the National Theatre of Scotland website and also from Box Office.

Please ask a member of Ticketing Services staff for more information.

If you have any feedback, please contact us at
access@nationaltheatrescotland.com

VISUAL GUIDE FOR THE ENEMY AT PERTH THEATRE



I am going to The Enemy at Perth Theatre, Mill St, Perth, PH1 5HZ.



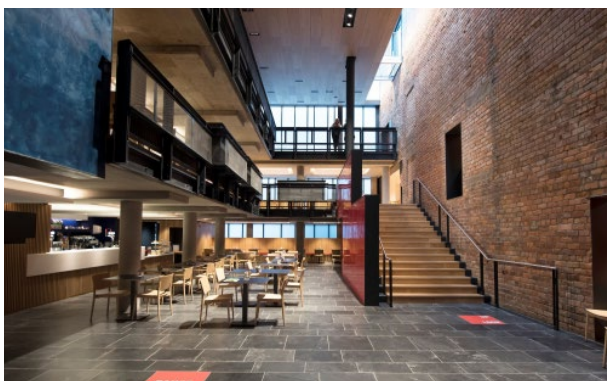
The evening shows will start at 7.30pm.
The afternoon show will start at 2.30pm.
I should arrive a little earlier than this.

The show will last around 1 hour and 30 minutes
and will not include an interval break.



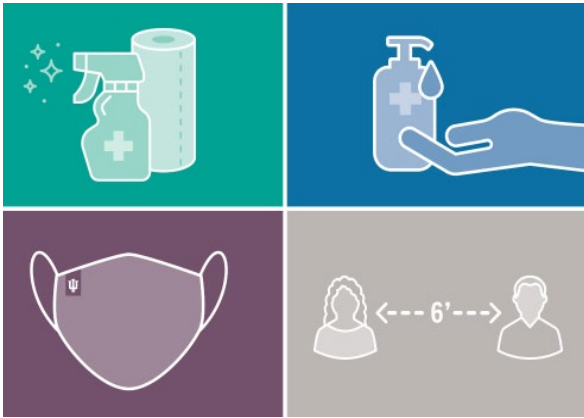
This is the entrance to Perth Theatre where the performance will be taking place.

The front of Perth Theatre looks like this. I will enter through the automatic glass doors underneath the large sign.



When I walk inside the centre, I will see this area called the foyer.

There will be Visitor Experience staff who can help with any questions about the event. It might be quite busy and noisy with other members of the audience.



Because the COVID-19 virus is still around, I will need to take some extra steps to be safe inside the venue.

I can find more information about these steps on the next few pages of this guide and on the Perth Theatre website:

horsecross.co.uk/visit-us/staying-safe-in-our-venues



Before I come into the building, I will need to put on a face covering and keep it on throughout my visit.

If I can't wear a face covering for medical reasons, then I do not have to.

I can remove my mask when eating or drinking, but should put it back on in between.



If I can, I should also download the NHS Protect Scotland app before visiting and have it on during my visit.

The app will alert me if I have been near another app user who tests positive for coronavirus.



If I am experiencing COVID-19 symptoms, I should not attend the venue.

These are just some of the symptoms. I can read more about them and other symptoms [here](#).

If me, or anyone who saw the show with me develops COVID-19 symptoms after our visit, I must contact NHS Scotland immediately to arrange a PCR test.



This is the Box Office. This is where I can buy tickets or collect prepaid tickets for the show.

If I have an e-ticket on my phone, or already have my tickets, I do not need to go to the box office.

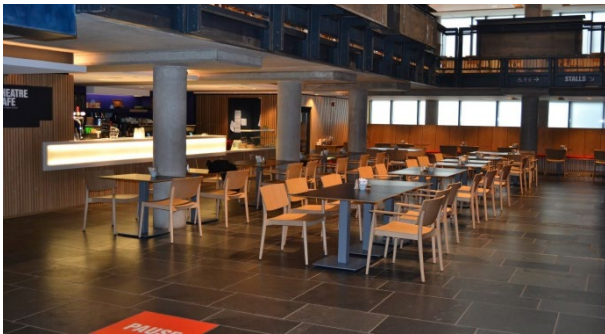
When I have my tickets, I can go into the theatre.



If I have tickets that are in the Dress Circle, I will need to take the stairs to get to my seats.

There is also a lift I can use to get up to the level where the Dress Circle is.

I can check on my ticket where my seat is.



There is a café and bar on the ground floor where I can buy drinks and snacks before the show begins.



I show my ticket to the Visitor Experience team when I go into the theatre auditorium where the performance is taking place.

They can help me if I need to ask questions.



Toilet: If I need to go to the toilet, I should look for these toilet signs or ask a member of the Visitor Experience team for directions.



Auditorium/ Performance space: The Enemy takes place in a traditional theatre.

I will watch the performance in this large room. My seat number is on my ticket. It will have a letter for the seating row and a seat number. A member of the Visitor Experience team can help me find it.



The lights will dim when the show is ready to start and the actors will come on to the stage.

The actors won't be able to talk directly to me during the play. They will be in character.



If I would like to take some time out during the play, I may leave at any time and find a seat in the foyer or the bar until I am ready to go back in.



At the end of the show the audience will clap to show the actors that they enjoyed the performance.

When the clapping has ended, the lights will get brighter. This means the show is over.

I can now leave the theatre. The Visitor Experience team will show me which way I can exit.

VISUAL STORY SYNOPSIS

THE ENEMY

The Enemy is a new play based on a famous play by Henrik Ibsen. This new story is about a town in Scotland that used to have plenty of money and jobs but doesn't anymore. A new leisure centre is being built in the town that promises to bring lots of jobs, but Dr Kirsten Stockmann discovers there is poison in the water used for the leisure centre that could put the town in danger.

Kirsten takes her discovery to the town councillor, her sister Vonny. She asks Vonny for the project to be shut down, but Vonny decides it is better to stay open to stop the town losing money.

The play is about Kirsten trying to get the truth out to the people of the town and Vonny trying to stop this. Both think what they are doing is the best thing for the town.

Things to know about the show:

- There is some loud music and fast moving video design in the show.
- In the story there are heated arguments, strong language and one moment of physical assault.

ACTORS AND CHARACTERS



HANNAH DONALDSON
Kirsten Stockmann



GABRIEL QUIGLEY
Vonny Stockmann



ELÉNA REDMOND
Petra Stockmann



NEIL MCKINVEN
Benny Hovstad



TAQI NAZEER
Aly Aslaksen



BILLY MACK
Derek Kilmartin

THE ENEMY - SCENE BREAKDOWN



SCENE 1

We see a cheesy corporate video advertising the launch of the “Big Splash” resort – a new health centre, water park and resort, which is set to transform the town. We hear from local citizens who are excited about the launch.

Petra, Kirsten's daughter, is getting ready for school. Her aunt Vonny, the town's Provost, appears via a Skype call. Kirsten and Vonny discuss the launch of the resort and Kirsten's speech – she is the Executive Director of the resort.

Benny, a local journalist, appears. They discuss Kirsten giving Benny an interview about the launch.



SCENE 2

Kirsten and Petra are in the car on the way to school. Lots of pupils in Petra's school are off sick. Kirsten receives a shocking text message.



SCENE 3

Vonny is being interviewed by Aly, a local celebrity, about the resort.

SCENE 4

Kirsten meet's Benny at the newspaper office. Kirsten reveals that she has received news that the town's water supply has been poisoned.



SCENE 5

Derek, Petra's grandfather, meets her in a café.



SCENE 6

Kirsten is on the phone to Benny. Aly then joins the call and they discuss getting the word out about the water supply.

Derek visits Kirsten at home and they discuss the fact that Derek's waste disposal plant has caused the water poisoning.

Vonny visits. She and Kirsten have a heated argument about her discovery.



SCENE 7

We see a stream of social media posts excited about the launch of the resort.

Benny and Vonny meet in a car park. Vonny blackmails Benny to ensure he does not publish the story about the poisoned water.



SCENE 8

Kirsten meets Benny in a pub. He reveals the paper will not be publishing her story.

SCENE 9

Kirsten publishes her own blog about the poisoned water. Aly does a live cast to inform the town that Kirsten has stood down from her role.



SCENE 10

We see an overwhelming stream of social media posts targeting Kirsten and trying to bring her down.

SCENE 11

Kirsten and Petra discuss the news and what is being said about her online.



SCENE 12

Aly calls Benny. Benny impresses on Aly that he needs to go along with what they tell him to protect his reputation.

SCENE 13

Petra tries to reassure her mum and convince her to take a stand.



SCENE 14

The launch of the “Big Splash” resort. Vonny makes a speech. She is interrupted by Kirsten who makes a long speech discussing what has happened.

She ends in a blistering tirade against the town. The scene erupts into fighting and arguments.



SCENE 15

We see Kirsten and Petra among the debris. Their house has been attacked by the townsfolk. They discuss what they will do next.

Derek arrives and reveals he has bought shares in the resort. He tries to blackmail Kirsten into retracting what she has said about the water supply.



Kirsten and Petra decide not to give in. They clear the rubble.

END OF SHOW