

A VISUAL GUIDE IS AVAILABLE FOR THIS PERFORMANCE.

It is available online on the National Theatre of Scotland website and also from Box Office.

Please ask a member of staff for more information.

If you have any feedback, please contact us at
access@nationaltheatrescotland.com

VISUAL GUIDE FOR THE ENEMY AT KING'S THEATRE EDINBURGH



I am going to The Enemy at King's Theatre
Edinburgh, 2 Leven Street, Edinburgh, EH3 9LQ



The evening shows will start at 7.30pm.
The afternoon show will start at 2.30pm
I should arrive a little earlier than this.

The show will last around 1 hour and 30 minutes
and will not include an interval break.



This is the entrance to the King's Theatre,
Edinburgh where the performance will be taking
place.

Access from the road to the front of the theatre is
up three steps.

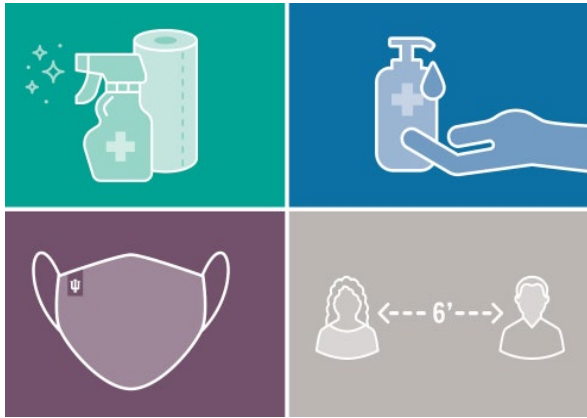
Wheelchair access is available through the Box
Office entrance at the right hand side of the
building.



This is the Box Office. This is where people I can
buy tickets or collect prepaid tickets for the show.

If I have an e-ticket on my phone, or already have
my tickets, I do not need to go to the box office.

When I have my tickets, I can go into the theatre.



Because the COVID-19 virus is still around, I will need to take some extra steps to be safe inside the venue.

I can find more information about these steps on the next few pages of this guide.



Before I come into the building, I will need to put on a face covering and keep it on throughout my visit.

If I can't wear a face covering for medical reasons, then I do not have to.

I can remove my mask when eating or drinking, but should put it back on in between.



If I can, I should also download the NHS Protect Scotland App before visiting and have it on during my visit.

The App will alert me if I have been near another App user who tests positive for coronavirus.



If I am experiencing COVID-19 symptoms, I should not attend the venue.

These are just some of the symptoms. I can read more about those and other symptoms [here](#).

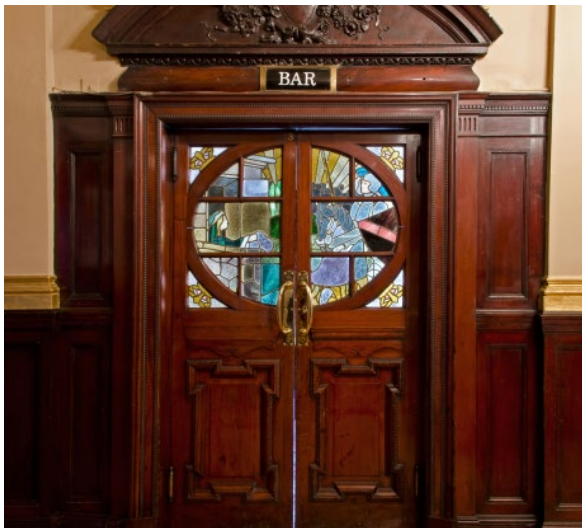
If me, or anyone who saw the show with me develops COVID-19 symptoms after our visit, I must contact NHS Scotland immediately to arrange a test.



When I walk inside the theatre I will be inside a big room called the foyer. It may be quite busy with lots of other people around.

I may need to go up stairs to get to my seat, as there is not a lift to all levels at the theatre.

There is a wheelchair platform lift on the right-hand side of the main foyer to get to the Stalls, where the wheelchair spaces are located.

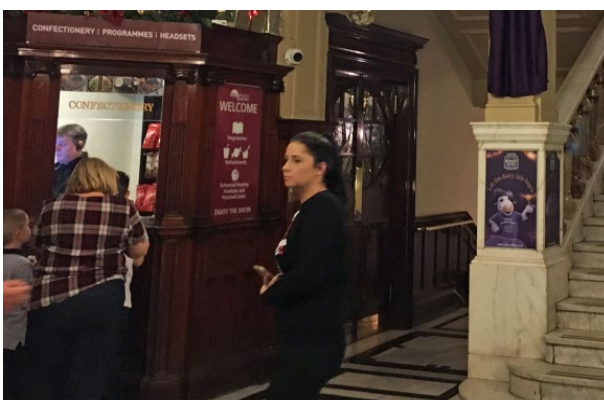


There are several bars upstairs on each level where I can buy drinks and snacks before the show begins.

If I can't use the stairs, I can talk to a member Front of House staff before they performance starts and they can bring refreshments.



There are two accessible toilets, one on the stalls level and one in the box office.



I will see Front of House staff wearing black in the foyer and around the theatre.

They work for the theatre, and can help me if I need to ask questions.



Auditorium/ Performance space: The Enemy takes place in a traditional theatre.

I will watch the performance in this large room. My seat number is on my ticket. It will have a letter for the seating row and a seat number. An usher can help me find it.



The lights will dim when the show is ready to start and the actors will come on the stage.

The actors won't be able to talk directly to me during the play. They will be in character.



If I would like to take some time out during the play I may leave at any time and find a seat in the foyer or the bar until I am ready to go back in.



At the end of the show the audience will clap to show the actors that they enjoyed the show.

When the clapping has ended, the lights will get brighter. This means the show is over.

I can now leave the theatre. Front of House staff will show me which way I can exit.

VISUAL STORY SYNOPSIS

THE ENEMY

The Enemy is a new play based on a famous play by Henrik Ibsen. This new story is about a town in Scotland that used to have plenty of money and jobs but doesn't anymore. A new leisure centre is being built in the town that promises to bring lots of jobs, but Dr Kirsten Stockmann discovers there is poison in the water used for the leisure centre that could put the town in danger.

Kirsten takes her discovery to the town councillor, her sister Vonny. She asks Vonny for the project to be shut down, but Vonny decides it is better to stay open to stop the town losing money.

The play is about Kirsten trying to get the truth out to the people of the town and Vonny trying to stop this. Both think what they are doing is the best thing for the town.

Things to know about the show:

- There is some loud music and fast moving video design in the show.
- In the story there are heated arguments, strong language and one moment of physical assault.

ACTORS AND CHARACTERS



HANNAH DONALDSON
Kirsten Stockmann



GABRIEL QUIGLEY
Vonny Stockmann



ELÉNA REDMOND
Petra Stockmann



NEIL MCKINVEN
Benny Hovstad



TAQI NAZEER
Aly Aslaksen



BILLY MACK
Derek Kilmartin

THE ENEMY - SCENE BREAKDOWN



SCENE 1

We see a cheesy corporate video advertising the launch of the “Big Splash resort – a new health centre, water park and resort, which is set to transform the town. We hear from local citizens who are excited about the launch.

Petra, Kirsten’s daughter, is getting ready for school. Her aunt Vonny, the town’s provost, appears via a Skype call. Kirsten and Vonny discuss the launch of the resort and Kirsten’s speech – she is the executive director of the resort.



Benny, a local journalist, appears. They discuss Kirsten giving Benny an interview about the launch.



SCENE 2

Kirsten and Petra are in the car on the way to school. Lots of pupils in Petra’s school are off sick. Kirsten receives a shocking text message.

SCENE 3

Vonny is being interviewed by Aly, a local celebrity, about the resort.



SCENE 4

Kirsten meet’s Benny at the newspaper office. Kirsten reveals that she has received news that the town’s water supply has been poisoned.

SCENE 5

Derek, Petra’s grandfather, meets her in a café.



SCENE 12

Aly calls Benny. Benny impresses on Aly that he needs to go along with what they tell him to protect his reputation.

SCENE 13

Petra tries to reassure her mum and convince her to take a stand.



SCENE 14

The launch of the Big Splash resort. Vonny makes a speech. She is interrupted by Kirsten who makes a long speech discussing what has happened.

She ends in a blistering tirade against the town. The scene erupts into fighting and arguments.



SCENE 15

We see Kirsten and Petra among the debris. Their house has been attacked by the townsfolk. They discuss what they will do next.

Derek arrives and reveals he has bought shares in the resort. He tries to blackmail Kirsten into retracting what she has said about the water supply.

Kirsten and Petra decide not to give in. They clear the rubble.



END OF SHOW