

# **VENUE VISUAL GUIDE**

# CUMBERNAULD THEATRE AT LANTERHOUSE

I am going to see a show at Lanternhouse, South Kildrum Ring Road, Cumbernauld, G67 2UF.



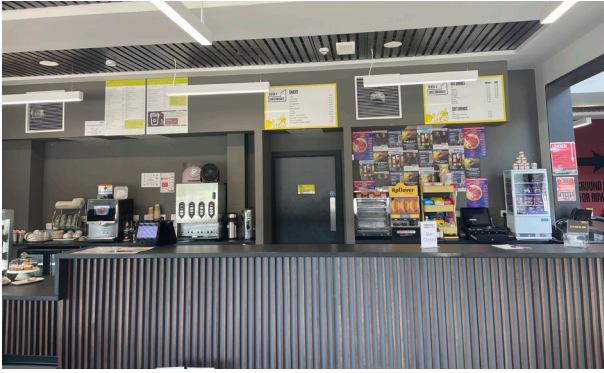
This is the main entrance to Lanternhouse where the performance will be taking place.

The front of Lanternhouse looks like this.



When I am inside, if I walk straight, I will reach the box office which will be on my right-hand side.

This is where I can buy tickets or collect prepaid tickets for the show. If I have an e-ticket on my phone, or already have my tickets, I do not need to go to the box office.

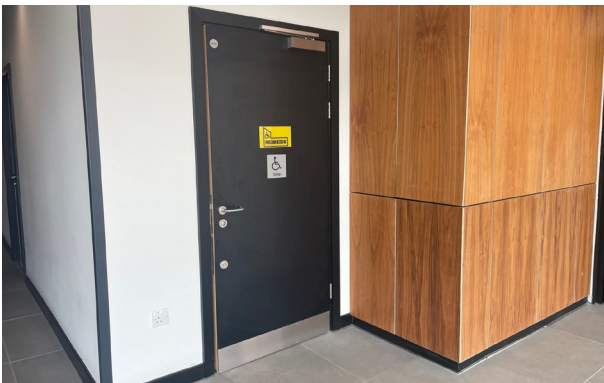


There is a bar/kiosk in the foyer where I can buy alcoholic and non-alcoholic drinks, and snacks before the show.

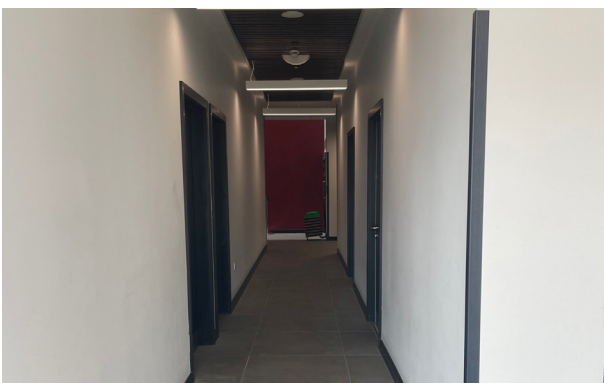
I will find it on my left-hand side, or across from the box office.



If I want to find the toilets, I should walk right from the entrance to the building and enter the corridor.



If I walk through the corridor, there is an accessible toilet on my left-hand side. It will be clearly marked.



If I turn left, I will reach more toilets. They will be clearly marked.

If I need directions, I can ask one of the staff members for help.

---



When the main auditorium is open, I can take my seat before the performance starts.

This is the corridor to the main auditorium.



**Auditorium/Performance space:** Maggie & Me takes place in a traditional theatre. I will watch the performance in this room.

The lights will dim when the show is ready to start, and the actors will come on to the stage. The actors will not talk directly to me during the play but the main character called Gary will at times talk to the whole audience. The actors will be in character at all times. I will need to be quiet while watching the show.



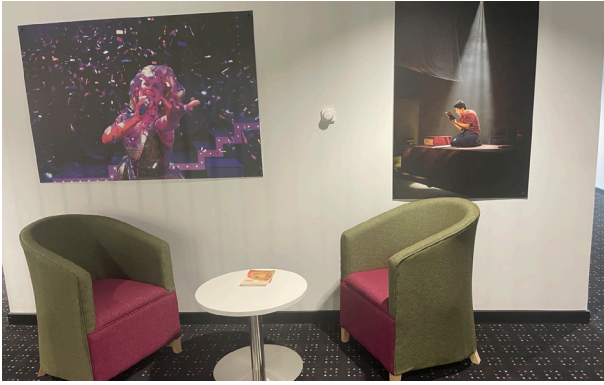
If I am disturbed by any noises or lights, I can ask one of the staff members for earplugs, ear defenders and dark glasses. I will have to return these items after the play finishes.



If I would like to take some time out during the play I may leave at any time and find a seat in the cafe until I am ready to go back in.

If I cannot find it, I should look for a sign “Chill Out Space” or ask a member of staff for directions.

---



I can also take a seat and relax in the upstairs area outside the auditorium.



At the end of the show the audience will clap to show the actors that they enjoyed the show.

When the clapping has ended, the lights will get brighter. This means the show is over.

I can now leave the theatre.

I should exit back through the way I came in.

---