

A VISUAL GUIDE IS AVAILABLE FOR THIS PERFORMANCE.

It is available to download on the National Theatre of Scotland website and also from the venue's Box Office.

Please ask a member of Box Office staff for more information.

If you have any feedback, please contact us at
access@nationaltheatrescotland.com

VISUAL GUIDE FOR THANK U, NEXT AT BELLAHOUSTON ACADEMY



I am going to Thank U, Next at Bellahouston Academy, 30 Gower Terrace, Bellahouston, Glasgow, G41 5QE.



The show will start at 7.00pm. I should arrive 15 minutes before the performance.

The show will last around 60 minutes and will not include an interval break.



This is the entrance to Bellahouston Academy.

I will enter through these doors.



If I have mobility issues, I can also use the accessible ramp. It is located at the Gower Terrace entrance.



Once I am inside, the box office will be on my right-hand side where the school office is located.

There will be staff at the desk who will check my tickets. They can also answer any questions I may have about the show.



Thank U, Next features very loud music. If I have sensitivity to sounds or lights, I can pick up ear plugs, dark glasses or ear defenders at the box office.

I can keep the ear plugs, but I will have to return ear defenders and dark glasses after the show.



I will enter the performance space through these clearly marked double doors.

If I have any difficulties locating the performance area, front of house staff will be available to guide me.



Once I go through the double doors, I will go down these red stairs.

I can now find myself a seat and wait for the performance to start.



If I have mobility issues, I can use the indoor ramp to access the performance space.

If I need to use this ramp, I should request assistance from a member of the front of house team to guide me.



This is the performance space. I will watch the performance in this large room. It will have banked seats. I can take any empty seat I like.

The performers will already be on stage as I enter the performance space. They won't talk directly to me during the play. They will be in character.

I will need to be quiet while watching the show.



There will be two screens on each side of the stage with live captions.

**GENDER
NEUTRAL
TOILET**

Toilet: If I need to go to the toilet I should look for these toilet signs or ask front of house staff for directions.

CHILL OUT SPACE

If I would like to take some time out during the show I may leave at any time and take a break in the Chill Out Space until I am ready to go back in.

I should look for this sign or ask staff for directions.



At the end of the show the audience will clap to show the performers that they enjoyed the show.

When the clapping has ended, the lights will get brighter. This means the show is over.

I can now leave. I should exit back through the way I came in.

VISUAL SYNOPSIS

THANK U, NEXT

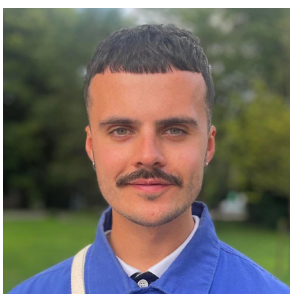
Thank U, Next is a costume drama dance theatre performance that uses cosplay instead of corsets. Through everyday media, a multitude of dance styles, colourful costumes, and popular music, 20 performers explore their identities and push the boundary of who they can and want to be.

CONTENT WARNINGS

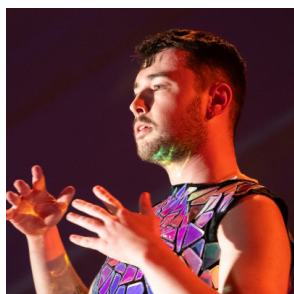
This performance contains the following content which may be triggering for some audience:

- Loud music
- Bright, flashing and strobing lights
- Smoke effects
- Strong language
- Discussions of homophobia and transphobia
- Mentions of Satan worship

CAST



CRAIG MCCORQUODALE
Performer



DAN BROWN
Performer



LACHLAN
Young Performer



SALLY
Young performer

BELLAHOUSTON ACADEMY STUDENTS

Abbie McInaw
Aya Muhammad
Astrid Redmond
Billy Hamilton
Caleb Innocent
Connor McErlane

Emily Gibb
Erin Morrison
Gwen Kirkpatrick
Kayla Davies
Madeline Birrell
Nina Spencer

Oscar Rufell
Reece Baird
Richard Nwagwu
Sof Safdar
Sophie Graham
William Paxton

THANK U, NEXT - SCENE BREAKDOWN



SCENE 1

A performer sits at the breakfast table contemplating their internal reality as another performer dressed as their dad cooks them breakfast.

SCENE 2

A collage of all the media young people are exposed to bombards the screens as the performer sits at the table trying to get ready to start the day until they are overwhelmed by the sheer volume of input.



SCENE 3

A performer in a sparkly diva outfit sings “Creep” as though they were at a rock concert in their own bedroom.

SCENE 4

A performer and a performer dressed as their dad lip-sync to a conversation about aesthetic while eating breakfast before school.



SCENE 5

A myriad of performers get ready for school as elements of a house (kitchen, bed, table, desk, wardrobe, a sofa split in two) swirl around the stage. Elements of the performers’s morning routine are projected above them. They come together and march to school then the stage clears.

SCENE 6

The performers run in with fantastical colourful cosplay and dance to embrace their identities.

SCENE 7

A performer dressed as a teacher lectures students who enter sporadically with chairs to build a classroom about the economic state of the world. A student writes lines on the chalkboard: “I will not daydream.”



THANK U, NEXT - SCENE BREAKDOWN



SCENE 8

A performer dressed as a teacher lip-syncs to “Baddest of Them All” while the students melt off their chairs in boredom. The performers in cosplay and animal masks enter with light sabres—two duel while the rest cheer them on. A performer stands on their chair with an animal mask and light sabre.



SCENE 9

The students gasp then the classroom disappears. The duel ends and those with light sabres hold them up.

SCENE 10

As a whistle blows a performer dressed as a teacher runs in with a football. They coach students upstage in a mini-scrimmage. The performers enter downstage and dance a Barbie-inspired dance, slowly becoming more and more themselves through the dance.

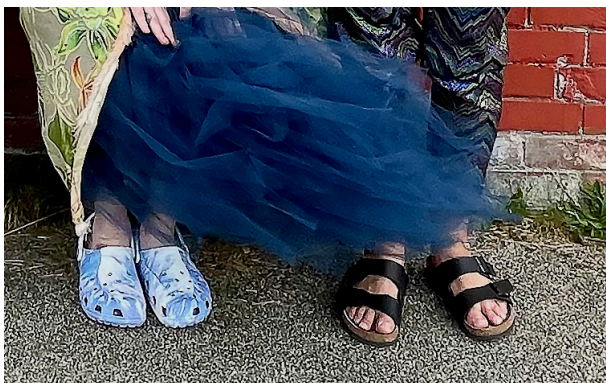


SCENE 11

The performers lip-sync angrily to “Sorry Not Sorry”, reclaiming themselves. The performers rebel against boxes they’re put in through different styles of movement and dance.

SCENE 12

A performer dressed as a mother and a performer portraying a father and their two children lip-sync over a stylized family dinner. The table is covered in plastic display food—bangers and mash with a side of peas.



SCENE 13

A performer rebels against their parents to Beyonce’s “Run the World”.

THANK U, NEXT - SCENE BREAKDOWN



SCENE 14

A performer and a performer portraying their mother lip sync to a conversation about identity while drinking hot chocolate on the sofa.

SCENE 15

A performer, trapped at home, sneaks out their bedroom window to go to a party where they can fully be themselves.



SCENE 16

The performers explore their identity and bodies through improvised movement.

SCENE 17

The performers intensify this improvised moment exploration until it builds to a climax, losing pieces of their cosplay, and they begin, one by one, to join a unified choreography that brings them to the ground until they leap up. Everyone stops and one performer brings their improvised movement to the centre. The performers look out over the audience embracing themselves for who they are or could be before beginning the group choreography again. They dance until they find a moment of stillness in groups on the floor.



SCENE 18

A performer comes centre stage and begins to sing "Creep". In small groups, performers rise from the floor and begin marching while two performers move the bed centre stage. As the song goes on, all the performers crowd around the bed, looking out into the audience.



THE END

The performers come forward in a line at the front of the stage and bow to the audience.
