

# **A VISUAL GUIDE IS AVAILABLE FOR THIS PERFORMANCE.**

It is available to download on the National Theatre of Scotland website and also from the venue's Box Office.

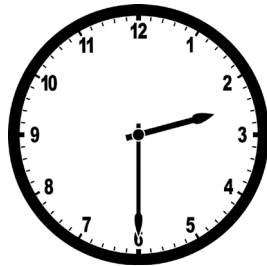
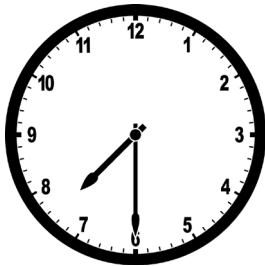
Please ask a member of Box Office staff for more information.

If you have any feedback, please contact us at  
**[access@nationaltheatrescotland.com](mailto:access@nationaltheatrescotland.com)**

# **VISUAL GUIDE FOR DRACULA: MINA'S RECKONING AT FESTIVAL THEATRE**



I am going to Dracula: Mina's Reckoning at Festival Theatre, 13-29 Nicolson St, Edinburgh, EH8 9FT



The evening shows will start at 7.30pm.  
The afternoon show will start at 2.30pm  
I should arrive a little earlier than this.

The show will last around 2 hours and 10 minutes  
and will include an interval break.



This is what the theatre looks like from the outside.  
It has a modern front with big windows.

There are lots of buses which stop nearby. The  
closest bus stops are just past Nicolson Square.



This is the main entrance. I will enter through these  
doors.

The door on the left is wheelchair accessible and  
has a ramp. This door can be opened by pushing  
the button on the end of the handrails.



When I walk inside I will see the box office to my right, where I can buy tickets or pick up prepaid tickets.

I might have to wait in a line if other people are collecting tickets too, but this only takes a short moment.

If I have an e-ticket on my phone, or already have my tickets, I do not need to go to the box office.

When I have my tickets, I can go into the theatre.

---



To the left, I will find the café, where I can buy drinks or a snack.

The café is open before shows. It is a nice place to spend time if I arrive early.

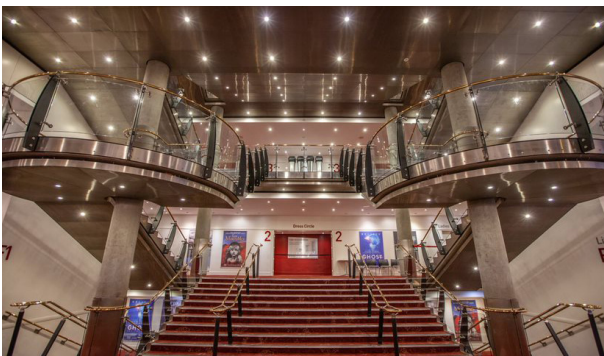
---



When I arrive, I will be met by friendly staff, who wear black t-shirts and purple lanyards.

The front of house staff are here to look after me. They will show me to my seats and can help me with any questions.

---



I will watch the show from the auditorium, which opens 30 minutes before the show begins. The front of house staff will let me know when it is time to take my seat.

The auditorium is upstairs. I can take these stairs to get there.

---

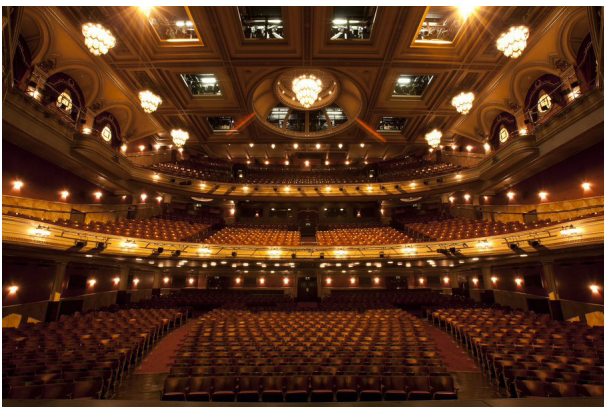




I can also take the lift to any level. The silver sign tells me what I will find on each level.



I might also hear a loud bell and announcement a few minutes before the show begins. This is nothing to worry about, it is just to make sure that everyone knows the show will start soon.



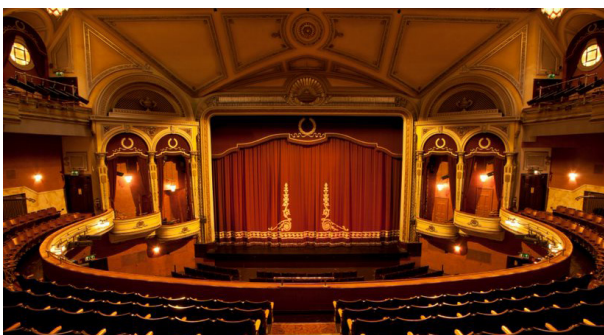
**Auditorium/ Performance space:** Dracula: Mina's Reckoning takes place in a traditional theatre. The auditorium is split over three levels called The Stalls, The Dress Circle and the Upper Circle.

I will watch the performance in this large room. My seat number is on my ticket. It will have a letter for the seating row and a seat number. A member of staff can help me find it.

The lights will dim when the show is ready to start and the actors will come on to the stage.

The actors will not talk directly to me during the play. They will be in character.

I will need to be quiet while watching the show.



This is what the stage looks like from the seats.

---



This is The Stalls, the lowest level and closest to the stage.

There are no steps inside the stalls. There are 8 wheelchair spaces available in row P.



The top level is called the Upper Circle.

This is the highest part of the building, and there are steps to get to my seat. It is a bit steeper in this part of the auditorium. If I do not like heights, I can let the staff know and they will be happy to help.



If I find sounds or lights disturbing during the show, I can ask a member of staff for earplugs, ear defenders or dark glasses at any time. I will need to return them after the performance.



I am welcome to leave the auditorium any time I like. Outside the auditorium, I will find lots of helpful spaces to make myself feel comfortable.

There are toilets on every level of the theatre.

Accessible toilets can be found on Levels 1 and 2.

---





This is the merchandise desk on Level 1.

This is where I can come to buy programmes, ice cream, snacks and sometimes merchandise like t-shirts and mugs.

It can be busy here just before the show, but I can always come back later when it is quieter.



The theatre has two bars. One is just above The Stalls (F1), and the other is just above The Dress Circle (F2).

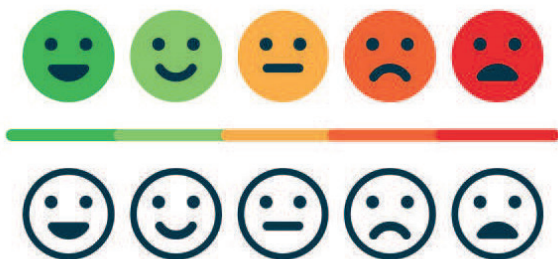
I will find information about where to find the bars on signs like this one. The front of house staff will also be happy to show me the way.



Each bar has a big open space with tables in the middle and a counter serving drinks and sweets at either end.

It can get quite busy at the bar, especially just before a show and during the interval.

Once the show begins, the bars will be empty, so this is a good place to come if I need a quiet space.



Watching the show might make me, or the people around me, feel different things.

There might be moments which make the people around me laugh. There might also be parts of the story which could make me feel sad, frightened, surprised or unsure. That is okay.

I can leave the auditorium at any time I want.

---



There will be a break in the middle. This is called the interval, and it is a great time to go to the toilet if I need, or to get a drink.

The lights will go brighter and the auditorium doors will open.



When the performance has finished, the performers will bow and leave the stage.

Some people around me might clap, cheer or stand up to show that they have enjoyed the performance. I can join in if I would like to.



When it is time to go, the lights in the auditorium will get brighter, so I can leave safely. People might start to move around and leave the auditorium.

I can always stay sitting until it is less busy if I prefer. When I am ready to leave, the front of house staff will show me the way out.

---

---

## VISUAL STORY SYNOPSIS

### DRACULA: MINA'S RECKONING

Dracula: Mina's Reckoning is a new National Theatre of Scotland production based on Bram Stoker's classic novel and adapted by Morna Pearson. The show features an all-women and non-binary cast and is uniquely Scottish.

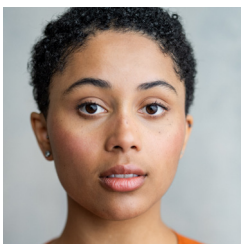
The story is set in a psychiatric hospital in Aberdeenshire in 1897, where a newly admitted patient, Mina Murray, shares her memories of meeting Dracula and witnessing the world where immortality is possible. Her memories come to life on stage as they are reenacted by each patient. The set is illuminated with text and images during the show. The show also features dramatic music and funny moments.

Things to know about the show:

- Contains very loud sounds and music.
- Contains moments of complete darkness.
- There are multiple "jump scare" moments throughout the show.
- Contains simulated self-harm and blood.
- Simulated violence features from the start and throughout the show.
- Contains strong language and heated confrontations.

---

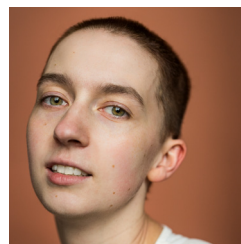
## ACTORS AND CHARACTERS



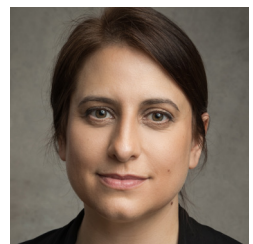
**DANIELLE JAM**  
Mina



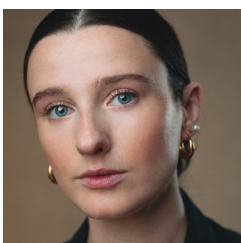
**LIZ KETTLE**  
Dracula



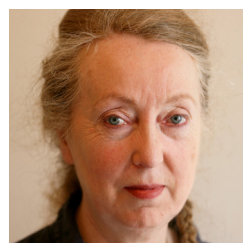
**ROS WATT**  
Renfield



**NATALIE ARLE-TOYNE**  
Van Helsing



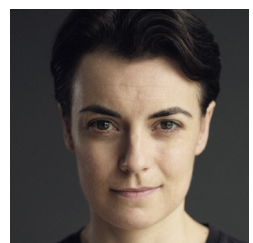
**AILS DAVIDSON**  
Lucy



**ANNE LACEY**  
Mr Swails



**CATRIONA FAINT**  
Jonathan



**MAGGIE BAIN**  
Dr Seward



# DRACULA: MINA'S RECKONING - SCENE BREAKDOWN

---



---

## ACT ONE

---

### SCENE 1

A distressed Mina Murray arrives at the Aberdeen Asylum for Women and demands to be let in.

### SCENE 2

The next evening, a group of asylum patients grow concerned about Mina's wellbeing when they find a stack of journals describing unbelievable things. Mina encourages them to read them and discover her story.

### SCENE 3

The journal takes us back in time to meet Jonathan, a solicitor and friend of Mina's, who is preparing to go on a business trip to Transylvannia.

### SCENE 4

Jonathan travels to Transylvannia but when he arrives, the local people warn him against going into Castle Dracula.

### SCENE 5

Back in Scotland, Mina meets her friend Lucy in Cruden Bay for a holiday. Lucy tells Mina that she's engaged to Dr Thomas Seward who runs the Aberdeen Asylum for Women.

Mr Swails, a soothsayer and Mina's family friend, arrives and warns them that something bad is coming.

### SCENE 6

Jonathan enters Castle Dracula and meets Count Dracula. Count Dracula asks Jonathan to teach him about Scotland and warns him to be careful in the castle.

Renfield, a patient at the Aberdeen Asylum, begins having a conversation with an unseen force they call the 'Maister'.

# DRACULA: MINA'S RECKONING - SCENE BREAKDOWN

---



## SCENE 7

Jonathan realises there is something wrong in Castle Dracula and stumbles across a pack of vampires.

## SCENE 8

In Scotland, Dr Seward takes Mina and Lucy on a tour of the Aberdeen Asylum and introduces them to Renfield, who is still talking to an unseen Maister. Renfield tells Mina that the Maister has promised them freedom.



## SCENE 9

Mina visits Lucy again in Cruden Bay and worries about Jonathan, who is not yet back from Transylvania. A storm is coming and Mina spots a ship, the Demeter, out on the dangerous sea.

## SCENE 10

Mina bumps into Mr Swails who tells her the story of the Demeter, before begging her to run home to safety.

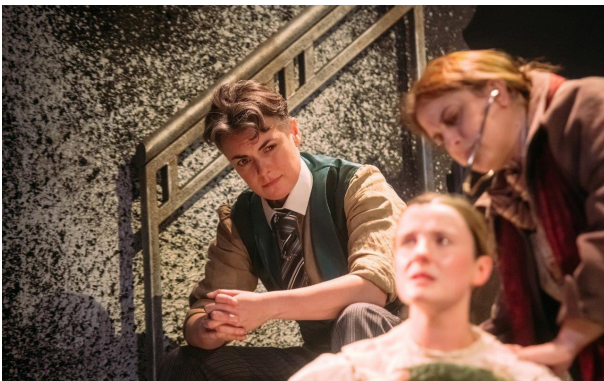


## SCENE 11

In Cruden Bay, Lucy falls sick and begins sleepwalking. Mina desperately looks after her friend but can't understand what's wrong with her.

## SCENE 12

Dr Seward arrives and argues with Mina about Lucy's illness. Dr Seward writes to his old medical teacher, Professor Van Helsing, who promises to come to Cruden Bay himself.



## SCENE 13

Van Helsing arrives to treat Lucy and grows concerned about the unnatural nature of Lucy's illness. They attempt to treat Lucy when Jonathan arrives home from Transylvania.

---

## END OF ACT ONE & INTERVAL

---



# DRACULA: MINA'S RECKONING - SCENE BREAKDOWN

---



---

## ACT TWO

---

### SCENE 1

Mina pours her grief at Lucy's human death into researching vampires. Dr Seward struggles to believe Lucy is now a vampire, but Jonathan and Van Helsing finally convince him. The men decide to hunt Lucy against Mina's wishes and lock her into Dr Seward's house to protect her.



### SCENE 2

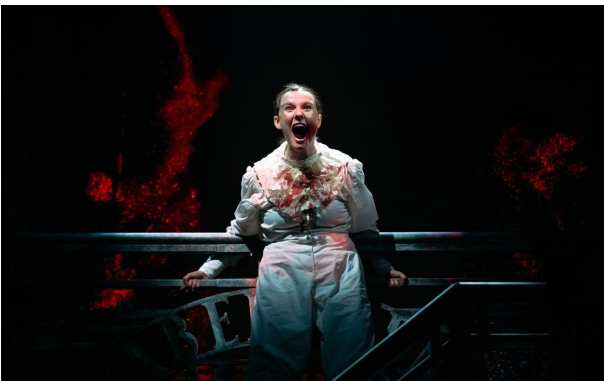
Renfield calls out to their Maister, begging them to deliver their promise of freedom.

### SCENE 3

Mina tries to climb out the window and stop the men's plan but is prevented by Dracula, who tries to convince her to become a vampire.

### SCENE 4

Van Helsing, Dr Seward, and Jonathan wait at Lucy's tomb for vampire Lucy to return. Mina arrives just as Dr Seward stakes Lucy through the heart, killing her vampire form. He uses more force than necessary, totally destroying her body.



### SCENE 5

Dr Seward curses Lucy at her grave for becoming a vampire. Dracula appears and again promises Mina a new life of opportunities and freedom.

Back in the asylum, the patients discuss the difficult decision Mina has to make.

### SCENE 6

Mina realises Renfield's Maister is Dracula and visits them in the asylum. Renfield warns her against trusting Dracula.





# DRACULA: MINA'S RECKONING - SCENE BREAKDOWN

---



## SCENE 7

Mina searches for Dracula but comes across Mr Swails who is now a vampire. He warns her to keep her crucifix on, as it is the only way to protect herself from Dracula. Mina decides to throw it into the sea.

## SCENE 8

Dracula finds Mina and she chooses to become a vampire. Dracula tells her she must now go and drink human blood to complete her transformation.



## SCENE 9

Mina enjoys her new vampire powers until she experiences Dracula killing Renfield through their psychic connection. Dr Seward arrives and tries to lock Mina in the asylum but she kills him and drinks his blood.

Jonathan arrives in time to see Mina drink Dr Seward's blood and tells Van Helsing, who vows to hunt Mina and Dracula down to end the vampire threat.

Dracula congratulates Mina and tells her she will now serve him forever. Mina decides to kill Dracula, risking her own life, rather than serve him.



## SCENE 10

Back in the asylum, Mina offers to share her new power with the patients to set them free.