

# **A VISUAL GUIDE IS AVAILABLE FOR THIS PERFORMANCE.**

It is available to download on the National Theatre of Scotland website and also from the venue's Box Office.

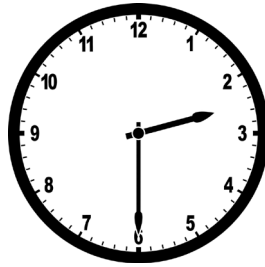
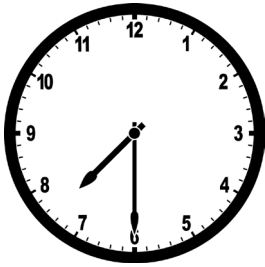
Please ask a member of Box Office staff for more information.

If you have any feedback, please contact us at  
**[access@nationaltheatrescotland.com](mailto:access@nationaltheatrescotland.com)**

# **VISUAL GUIDE FOR DRACULA: MINA'S RECKONING AT EDEN COURT**



I am going to Dracula: Mina's Reckoning at Eden Court, Bishops Road, Inverness, IV3 5SA.



The evening shows will start at 7.30pm.  
The afternoon show will start at 2.30pm.  
I should arrive a little earlier than this.

The show will last around 2 hours and 10 minutes  
and will include an interval break.



This is the entrance to Eden Court where the performance will be taking place.

The front of Eden Court looks like this. I will enter through these doors.



When I walk inside the centre I will see this area called the foyer.

There will be staff who can help with any questions about the event. It might be quite busy and noisy with other members of the audience.



This is the Ticket Sales desk. This is where I can buy or collect tickets for the show.

If I have an e-ticket on my phone, or already have a paper ticket, I do not need to go to the Ticket Sales desk.

When I have my tickets, I can go into the theatre. My ticket tells me which door to use.

---



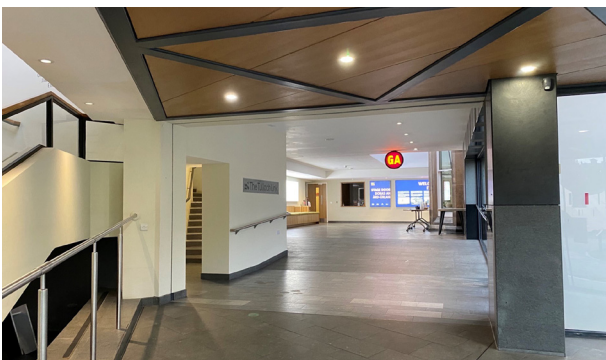
This is the sweetie shop where I can buy snacks, juice and water before the show and during the interval. It is at the right hand side of the Ticket Sales desk.

---



I can also buy a drink at the bar.

---



I will need to show my ticket to the ushers when I go into the auditorium, which is called the Empire Theatre. They can help me if I need to ask questions.

---





**Toilet:** If I need to go to the toilet I should look for these toilet signs or ask an usher for directions.



**Auditorium/ Performance space:** Dracula: Mina's Reckoning takes place in a traditional theatre.

I will watch the performance in this large room. My seat number is on my ticket. It will have a letter for the seating row and a seat number. An usher can help me find it.



The lights will dim when the show is ready to start and the actors will come on to the stage.

The actors won't talk directly to me during the play. They will be in character.

I will need to be quiet while watching the show.



If I find sounds or lights disturbing during the show, I can ask a member of staff for earplugs, ear defenders or dark glasses at any time. I will need to return them after the performance.

---



If I would like to take some time out during the play I may leave at any time and find a seat in the foyer or the bar until I am ready to go back in.



At the end of the show the audience will clap to show the actors that they enjoyed the show.

When the clapping has ended, the lights will get brighter. This means the show is over.

I can now leave the theatre. Front of House staff will show me which way I can exit.

---

---

## VISUAL STORY SYNOPSIS

### DRACULA: MINA'S RECKONING

Dracula: Mina's Reckoning is a new National Theatre of Scotland production based on Bram Stoker's classic novel and adapted by Morna Pearson. The show features an all-women and non-binary cast and is uniquely Scottish.

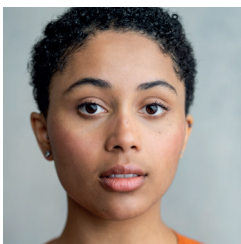
The story is set in a psychiatric hospital in Aberdeenshire in 1897, where a newly admitted patient, Mina Murray, shares her memories of meeting Dracula and witnessing the world where immortality is possible. Her memories come to life on stage as they are reenacted by each patient. The set is illuminated with text and images during the show. The show also features dramatic music and funny moments.

Things to know about the show:

- Contains very loud sounds and music.
- Contains moments of complete darkness.
- There are multiple "jump scare" moments throughout the show.
- Contains simulated self-harm and blood.
- Simulated violence features from the start and throughout the show.
- Contains strong language and heated confrontations.

---

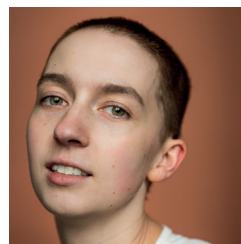
## ACTORS AND CHARACTERS



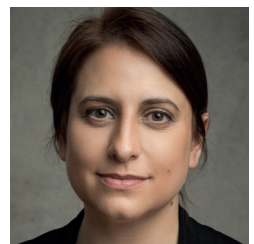
**DANIELLE JAM**  
Mina



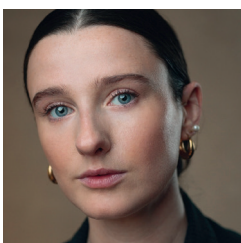
**LIZ KETTLE**  
Dracula



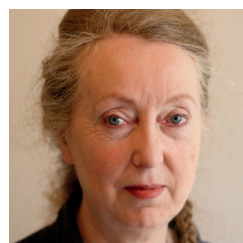
**ROS WATT**  
Renfield



**NATALIE ARLE-TOYNE**  
Van Helsing



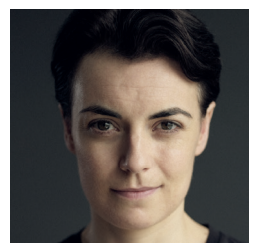
**AILSA DAVIDSON**  
Lucy



**ANNE LACEY**  
Mr Swails



**CATRIONA FAINT**  
Jonathan



**MAGGIE BAIN**  
Dr Seward



# DRACULA: MINA'S RECKONING - SCENE BREAKDOWN

---



---

## ACT ONE

---

### SCENE 1

A distressed Mina Murray arrives at the Aberdeen Asylum for Women and demands to be let in.

### SCENE 2

The next evening, a group of asylum patients grow concerned about Mina's wellbeing when they find a stack of journals describing unbelievable things. Mina encourages them to read them and discover her story.

### SCENE 3

The journal takes us back in time to meet Jonathan, a solicitor and friend of Mina's, who is preparing to go on a business trip to Transylvannia.

### SCENE 4

Jonathan travels to Transylvannia but when he arrives, the local people warn him against going into Castle Dracula.

### SCENE 5

Back in Scotland, Mina meets her friend Lucy in Cruden Bay for a holiday. Lucy tells Mina that she's engaged to Dr Thomas Seward who runs the Aberdeen Asylum for Women.

Mr Swails, a soothsayer and Mina's family friend, arrives and warns them that something bad is coming.

### SCENE 6

Jonathan enters Castle Dracula and meets Count Dracula. Count Dracula asks Jonathan to teach him about Scotland and warns him to be careful in the castle.

Renfield, a patient at the Aberdeen Asylum, begins having a conversation with an unseen force they call the 'Maister'.

# DRACULA: MINA'S RECKONING - SCENE BREAKDOWN

---



## SCENE 7

Jonathan realises there is something wrong in Castle Dracula and stumbles across a pack of vampires.

## SCENE 8

In Scotland, Dr Seward takes Mina and Lucy on a tour of the Aberdeen Asylum and introduces them to Renfield, who is still talking to an unseen Maister. Renfield tells Mina that the Maister has promised them freedom.

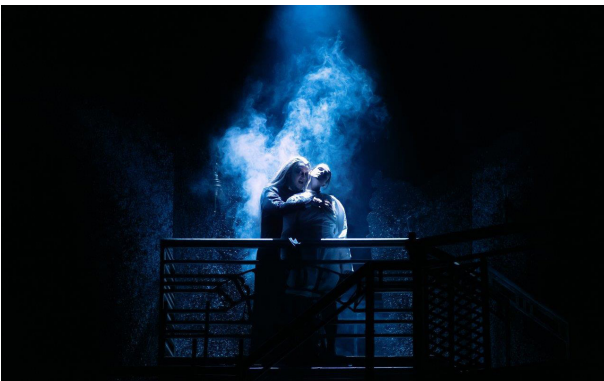


## SCENE 9

Mina visits Lucy again in Cruden Bay and worries about Jonathan, who is not yet back from Transylvania. A storm is coming and Mina spots a ship, the Demeter, out on the dangerous sea.

## SCENE 10

Mina bumps into Mr Swails who tells her the story of the Demeter, before begging her to run home to safety.

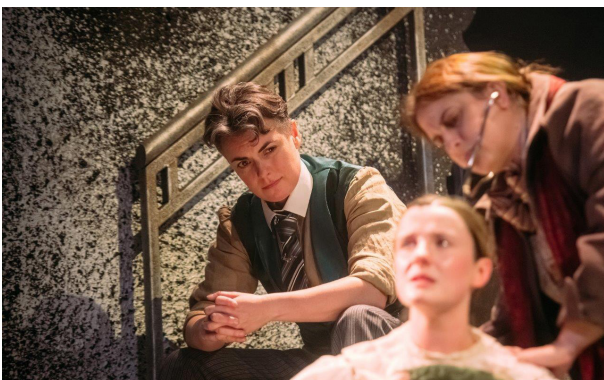


## SCENE 11

In Cruden Bay, Lucy falls sick and begins sleepwalking. Mina desperately looks after her friend but can't understand what's wrong with her.

## SCENE 12

Dr Seward arrives and argues with Mina about Lucy's illness. Dr Seward writes to his old medical teacher, Professor Van Helsing, who promises to come to Cruden Bay himself.



## SCENE 13

Van Helsing arrives to treat Lucy and grows concerned about the unnatural nature of Lucy's illness. They attempt to treat Lucy when Jonathan arrives home from Transylvania.

---

## END OF ACT ONE & INTERVAL

---



# DRACULA: MINA'S RECKONING - SCENE BREAKDOWN

---



## ACT TWO

---

### SCENE 1

Mina pours her grief at Lucy's human death into researching vampires. Dr Seward struggles to believe Lucy is now a vampire, but Jonathan and Van Helsing finally convince him. The men decide to hunt Lucy against Mina's wishes and lock her into Dr Seward's house to protect her.

### SCENE 2

Renfield calls out to their Maister, begging them to deliver their promise of freedom.

### SCENE 3

Mina tries to climb out the window and stop the men's plan but is prevented by Dracula, who tries to convince her to become a vampire.

### SCENE 4

Van Helsing, Dr Seward, and Jonathan wait at Lucy's tomb for vampire Lucy to return. Mina arrives just as Dr Seward stakes Lucy through the heart, killing her vampire form. He uses more force than necessary, totally destroying her body.

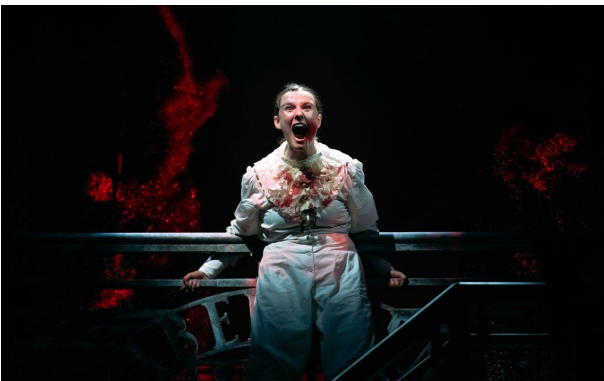
### SCENE 5

Dr Seward curses Lucy at her grave for becoming a vampire. Dracula appears and again promises Mina a new life of opportunities and freedom.

Back in the asylum, the patients discuss the difficult decision Mina has to make.

### SCENE 6

Mina realises Renfield's Maister is Dracula and visits them in the asylum. Renfield warns her against trusting Dracula.



# DRACULA: MINA'S RECKONING - SCENE BREAKDOWN

---



## SCENE 7

Mina searches for Dracula but comes across Mr Swails who is now a vampire. He warns her to keep her crucifix on, as it is the only way to protect herself from Dracula. Mina decides to throw it into the sea.

## SCENE 8

Dracula finds Mina and she chooses to become a vampire. Dracula tells her she must now go and drink human blood to complete her transformation.



## SCENE 9

Mina enjoys her new vampire powers until she experiences Dracula killing Renfield through their psychic connection. Dr Seward arrives and tries to lock Mina in the asylum but she kills him and drinks his blood.

Jonathan arrives in time to see Mina drink Dr Seward's blood and tells Van Helsing, who vows to hunt Mina and Dracula down to end the vampire threat.

Dracula congratulates Mina and tells her she will now serve him forever. Mina decides to kill Dracula, risking her own life, rather than serve him.



## SCENE 10

Back in the asylum, Mina offers to share her new power with the patients to set them free.