



VISUAL GUIDE FOR NATIONAL THEATRE OF SCOTLAND AT ROCKVILLA



I am going to the National Theatre of Scotland at Rockvilla, 125 Craighall Road, Glasgow, G4 9TL.



Rockvilla is located on the Forth and Clyde canal in the north side of Glasgow.

It can be accessed by car from Craighall Road or is a fifteen minute walk from Cowcaddens Subway.



There is car access from Craighall Road – the vehicle ramp is signposted by two temporary banners and roadside AA signage. The car park includes two Blue Badge spaces closest to the entrance. There is an overflow carpark to the left of the main carpark.



From Cowcaddens Subway, it should take 15 minutes to walk to Rockvilla.

Upon exiting Cowcaddens Subway Station, walk towards Garscube Road.

With the Dundas Court flats to your right, walk under the motorway underpass until you reach the stairs on your right.



Climb the few stairs or use the ramp beside them, then continue on the right hand path until you reach a longer staircase on your left.



Walk towards the pedestrian bridge near the power pylon, cross the bridge and turn left, and you will be at Rockvilla.



This is the front door. If the doors are not already open, you need to press the button with the bell icon on the panel on the right hand side - they will not open automatically.

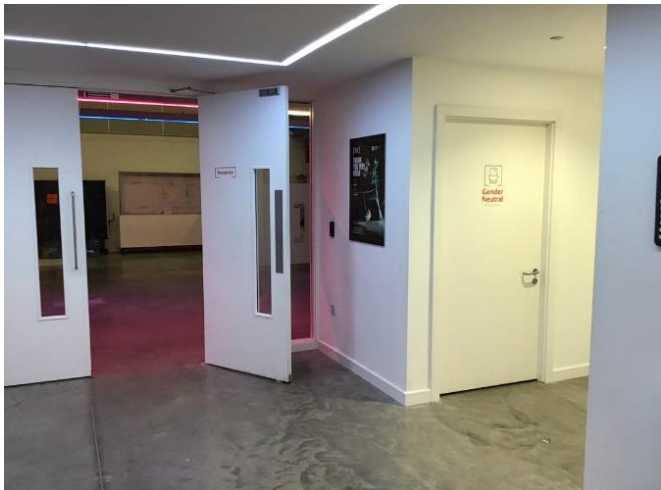


This is the reception area. If there is an event on at Rockvilla, it may be decorated differently. There are reception staff as you come in, who you can talk to if you have any questions. You can use the sofas, chairs and tables here. There is a kitchen if you would like water, tea or coffee.



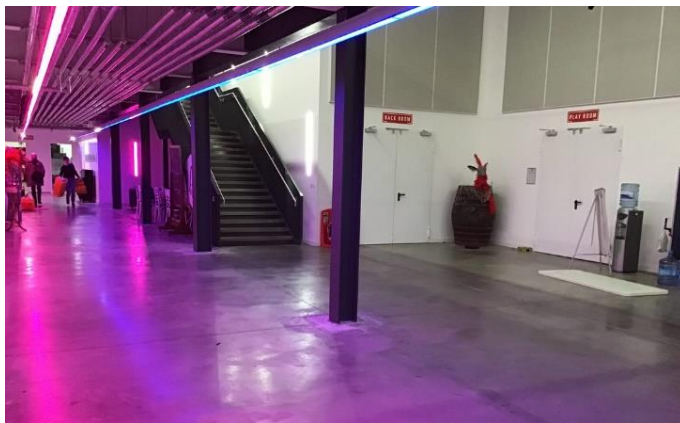
When you arrive at reception you will be asked to sign in or be signed in by someone else.

We ask everyone to tick themselves in and out every time they arrive or leave.



These are the doors to the atrium, the main space at Rockvilla where you can get to the offices upstairs or the rehearsal rooms on the ground floor.

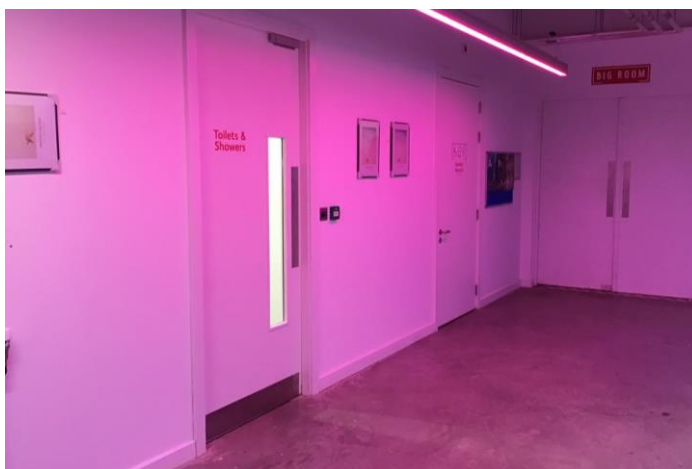
In the reception area, there are gender neutral and accessible toilets to the right of these doors.



This is the atrium, the main space at Rockvilla.

If there is an event on, there may be lots of people and the decoration and lighting may be different.

The Big Room and toilets are located down the corridor to the left hand side. The Back Room and the Play Room are ahead of you as you come through the doors from reception.



In the corridor to the Big Room there are male and female toilets and a gender neutral/accessible toilet.

This corridor may be busy with lots of people if an event is on.



This is the Big Room. It may look different and have bits of set and props, or even a stage when you come to visit.

It may be busy and have lots of people in it, as well as music and lights if there is an event on.



This is the Play Room.

It may look different and have bits of set and props, or even a stage when you come to visit.



This is the Back Room.

It may look different and have bits of set and props, or even a stage when you come to visit.



This is the Front Room. It may look different and have bits of set or props when you come to visit.

You can get to the Front Room from the Reception, however when there is an event on, the Front Room is used as a cloakroom where you can leave your bag and coat.