

# **A VISUAL GUIDE IS AVAILABLE FOR THIS PERFORMANCE.**

It is available on the National Theatre of Scotland website and also from Box Office.

Please ask a member of Ticketing Services staff for more information.

If you have any feedback, please contact us at  
**[access@nationaltheatrescotland.com](mailto:access@nationaltheatrescotland.com)**

# VISUAL GUIDE FOR DEAR BILLY AT AYR GAIETY



I am going to Dear Billy at Ayr Gaiety, Carrick St, Ayr, KA7 1NU.



The show will start at 7.30pm, I should arrive a little earlier than this.

The show will last approximately 1 hour and 20 minutes and will not include an interval break.



This is the Main Entrance to Ayr Gaiety, where the performance will be taking place.

I will enter through the door under the vertical sign that says "Gaiety Theatre".



This is the Stage Door and Box Office entrance. I can find it on the left-side front of the building.

This entrance has an accessible ramp for wheelchair users and physically impaired visitors.



When I walk inside the theatre, I will see this area called the Foyer. There will be staff who can help me with any questions about the event.



There is a Café and Bar in the Foyer where I can buy drinks and snacks before the show begins.



There is also a larger Stage Door Bar and restaurant area that I can find through the hallway to the left of the main entrance Foyer.



This is the Box Office. This is where I can buy tickets or collect prepaid tickets for the show.

If I already have my tickets, I do not need to go to the box office.

When I have my tickets, I can go into the theatre.

---



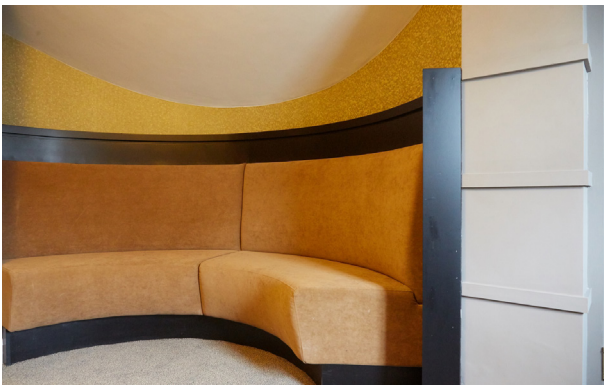


If I have tickets that are in the Stalls, I can enter the auditorium on the ground level.



If I have tickets that are in the Circle or the Balcony, I will need to take the stairs to get to my seats. I can also use a lift.

Entrances on all levels are marked with red signage.



There is a waiting area outside of the entrance to the Circle where I can sit down and relax.



If I am looking for directions, I should follow red signs like this or ask a member of staff for directions.

---



Venue staff will wear red polo shirts with name badges on them.

They can answer my questions and give me directions.



If I need a toilet, I can find one on the ground floor, in the hallway to the left of the foyer, first floor on either side of the entrance to the Circle, or top floor, to the right of the Balcony.

Accessible toilets can be found at the end of the hallway on the ground floor.

If I need help finding these, a member of staff can show me the way.



**Auditorium/ Performance space:** Dear Billy takes place in a traditional theatre.

I will watch the performance in this room. An usher can help me find a seat.

When the show is ready to start, the lights will dim and the actors will come out onto the stage. During the show, they may interact with the audience. I will need to be quiet while watching the show.



At the end of the show the audience will clap to show the actors that they enjoyed the show.

When the clapping has ended, the lights will get brighter. This means the show is over.

I can now leave the theatre.

I should exit back through the way I came in.

---

---

# VISUAL STORY SYNOPSIS

## DEAR BILLY

Dear Billy is a new National Theatre of Scotland production celebrating the Scottish icon, Billy Connolly, also known as The Big Yin. The play is written and performed by Gary McNair who has collected tales about Billy Connolly and, with a team of musicians, transformed them into a show that celebrates what Connolly means to people to the people of Scotland and beyond.

Dear Billy is a joyful and touching piece that uses music and humour, plus plenty of audience interaction. During the show, Gary recounts the numerous personal stories about Billy Connolly the team have collected, describing his background, personality, rise to fame and why we hold him so dear.

Things to know about the show:

- The show features live music and songs, neon lights and smoke effects. Sometimes all these elements happen at once
- The lighting on stage is brightly coloured at points while the auditorium remains dark
- The performer moves from microphone to microphone taking on different voices to tell the stories
- There is one performer and two musicians on stage
- The text includes swear words
- There is dark humour within the play and at points the telling of stories is emotional

---

## CAST



**GARY MCNAIR**

Performer



**SIMON LIDDELL**

Musician



**JILL O'SULLIVAN**

Musician



# DEAR BILLY - SHOW BREAKDOWN

---



The two musicians are on stage at the start of the show and remain seated in the same space throughout with various instruments.

On the back wall are curtains with chains at the centre. Above the stage is a giant pair of neon glasses.



There is a banana seat and boot on stage that lights up.

The performer moves between the banana seat and a number of microphones at the front of the stage.

Throughout the piece the performer retells recollections from the People of Scotland on their meeting of The Big Yin.



The performer goes between being these “storytellers” and being himself.

When being himself the performer is at the front of the stage and in front of the microphones.

