

A VISUAL GUIDE IS AVAILABLE FOR THIS PERFORMANCE.

It is available online on the National Theatre of Scotland website and also from Box Office.

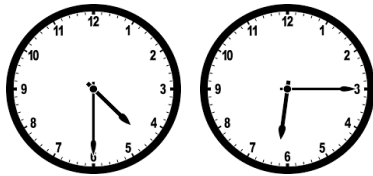
Please ask a member of staff
for more information.

If you have any feedback, please contact us at
access@nationaltheatrescotland.com



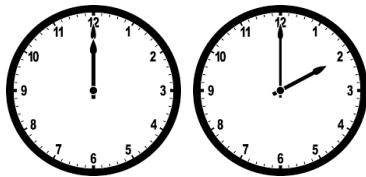
I am going to Like Flying at St Thomas Aquinas Secondary School, 112 Mitre Road, Glasgow, G14 9PP.

FRIDAY



The shows will start at 4.30pm and 6.15pm on Friday 17 March.

SATURDAY



On Saturday 18 March, the shows will start at 12.00pm and 2.00pm.

I should arrive at least 15 minutes before start time.



I will enter through the main entrance door on Mitre Road.

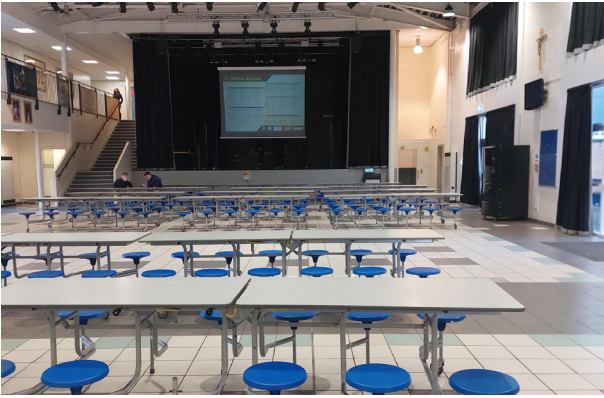
There is parking on site, please use the overspill car park.



I will go through the doors and enter the box office on the left-hand side. I will show my ticket and will be allocated a wristband.

There will be a waiting area where I can sit before show starts.

I will then be directed to a starting point in Social Area.



The show will start and end here in Social Area. The audience will be split into three groups and will be allocated a route to follow.

Each group is led by a guide. Each group has an usher.

This space will look different at the end of the performance than the start. Please follow your guide.

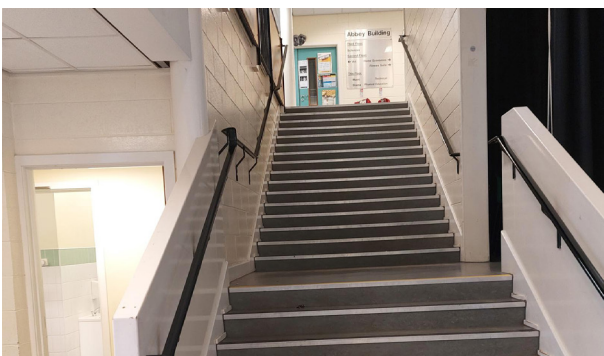


As part of the performance, I will be instructed to put headphones on.

If I want to change the volume, the controls are on the side of the headphones.



There will be a drummer on the route. They might be quite loud.



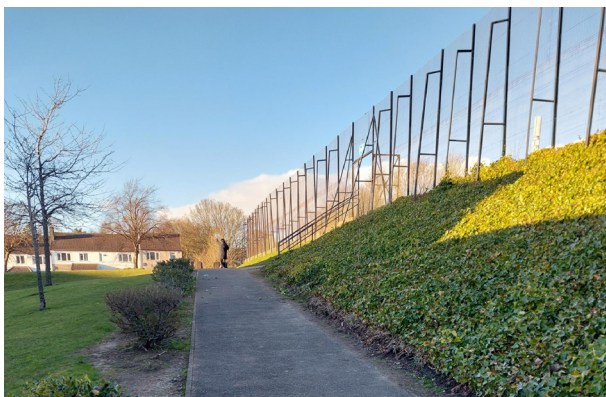
There are lots of stairs on the route, but an accessible route is available, using the lift.



This is the lift I can use if I need to.



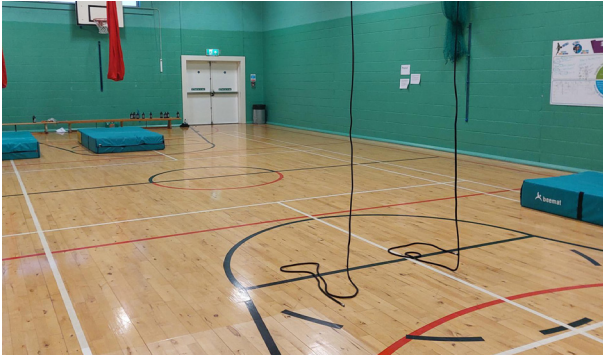
Some of the route is outside.



I will stand here to watch a performer in the distance



This is the space where individual swings will be placed. Audience are encouraged to take a seat on a swing.



There are two halls, where some of the performance will take place.

There will be performers on cocoons/harness in gym halls.



This is the science room, where some of the performance will take place. There will be a science experiment that takes place in this room involving filmed footage.
