

A VISUAL GUIDE IS AVAILABLE FOR THIS PERFORMANCE.

It is available on the National Theatre of Scotland website and also from box office.

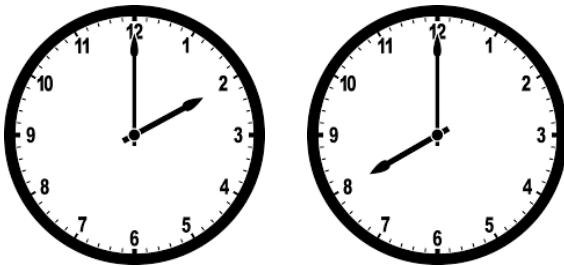
Please ask a member of box office staff for more information.

If you have any feedback, please contact us at
access@nationaltheatrescotland.com

VISUAL GUIDE FOR MEDEA AT THE HUB



I am going to Medea at The Hub, 348-350 Castlehill, Edinburgh, EH1 2NE



The evening shows will start at 8.00pm.
The afternoon show will start at 3.00pm.
I should arrive a little earlier than this.

The show will last around 1 hour and 20 minutes
and will not include an interval break.



This is the entrance to The Hub where the performance will be taking place.

I will enter through the main doors at the front. As there are lots of other events on, I may need to wait to cross the road so should arrive early to the performance.



When I walk inside the centre, I will see this area called the foyer.

There will be staff in yellow t shirts who can help with any questions about the event. It might be quite busy and noisy with other members of the audience.



This is the Box Office which I will see on the left when I come in. This is where I can buy tickets or collect prepaid tickets for the show.

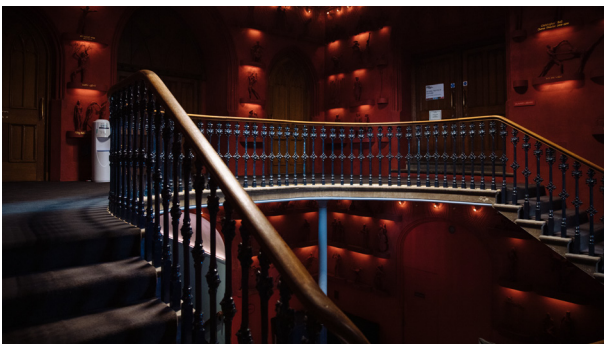
If I have an e-ticket on my phone, or already have my tickets, I do not need to go to the box office.

When I have my tickets, I can go down the corridor into the theatre.



At the end of the corridor is a set of stairs. I need to go up these stairs to go to the performance space.

There are also rails where I can leave my coat or bags with a member of staff if I would like. They will give me a number so they know which items are mine.



At the top of the stairs there is a set of main doors. I should go through these if my ticket says "Main Hall".

If my ticket says "Gallery" there is a blue hallway at the top of the stairs with a spiral staircase that I can go up. There is also a lift that goes from the ground floor.

If I need directions, I can ask a member of staff who is wearing a yellow t shirt.



Toilet: There are toilets on the ground floor just before the main stairs, in a light blue corridor.

There are more toilets at the top of the stairs outside of the performance space with a yellow sign that says "gender neutral". This means anyone can use it.



Auditorium/ Performance space: I will watch the performance in this large room where there is a long catwalk and lots of space to stand.

I can lean on the stage but I shouldn't sit on it or block any of the stairs, because actors will walk up and down these stairs during the play.

I will be standing for the entire play, so I should make sure to move and stretch sometimes to not get too sore.

If I am in the Gallery, I can sit in the high stools or chairs.



The lights will dim when the show is ready to start.

Actors who are pretending to be members of the audience when we come in will start to speak very loudly.

During the play, actors will move around in the hall and I might need to move to let them past.



If I would like to take some time out during the play, I should speak to an usher in a yellow t shirt.

They will let me leave and can let me go back in at a time that won't interrupt the show.



At the end of the show the audience will clap to show the actors that they enjoyed the performance.

When the clapping has ended, the lights will get brighter. This means the show is over.

I can now leave the theatre. The ushers will show me which way I can exit.

VISUAL STORY SYNOPSIS

MEDEA

The show is a modern re-telling of a tragedy written by the classical Greek playwright Euripides. His play has been re-written by Scots writer Liz Lochhead and is told in the Scots language. The play tells the story of Medea who in Greek mythology is the daughter of King Aeëtes of Colchis. Medea is the wife of Jason who she has helped on an adventure to find the Golden Fleece and left her home to follow to Corinth because she loved him.

The play starts just after Jason has abandoned Medea and their three children so he can marry Glauke, the daughter of King Kreon who rules Corinth. In the story, Medea battles with King Kreon, who banishes her and her children from Corinth. She also battles with Glauke and Jason, who are going to get married that day. Medea is supported by her nurse and manservant who also end up turning against her as she goes through with her revenge to Jason of killing Glauke, King Kreon during the wedding, then her three children as revenge for how she believes Jason has wronged her.

The other 'character' in the play is a chorus of ten women.

The play is staged on a cat-walk style stage which leads into the audience, who either sit or stand on either side. There are no scene changes. The chorus are sometimes standing in with the audience and sometimes on stage.

Things you should know:

- One chorus member is deaf and sometimes speaks in British Sign Language
 - One chorus member is visually impaired and is guided around the stage by other members of the chorus
 - There are children in the show but they are not listed on the next page.
 - The music for the show comes from a percussionist above the stage. Sometimes there can be some loud drum noises
 - The text includes some swear words
 - The play contains some very fierce arguments
 - There is one very bright light that sometimes shines onto the stage through the doors you entered into the auditorium through
 - The end of the play is very upsetting as Medea kills her three children. This happens off stage.
 - Medea and Jason enter the stage at the end of the show with blood on their clothes.
-

ACTORS AND CHARACTERS



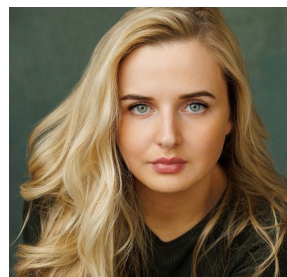
ADURA ONASHILE
Medea



ROBERT JACK
Jason



STEPHEN MCCOLE
King Kreon



ALANA JACKSON
Princess Glauke



ANNE LACEY
Nurse



ADAM ROBERTSON
Manservant



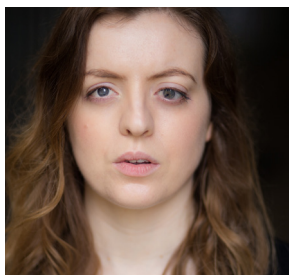
LINDSEY CAMPBELL
Chorus



PAULINE LOCKHART
Chorus



LOLA ALUKO
Chorus



BROOKE WALKER
Chorus



BEA WEBSTER
Chorus



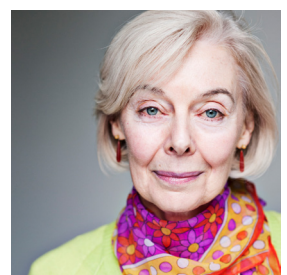
WENDY SEAGER
Chorus



FLETCHER MATHERS
Chorus



JANETTE FOGGO
Chorus



EILEEN NICHOLAS
Chorus



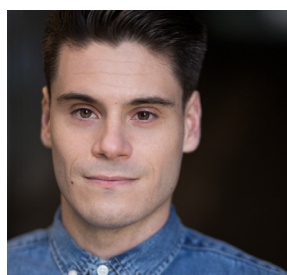
LEYLA AYCAN
Chorus



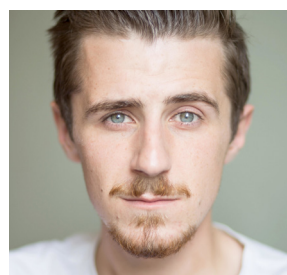
PIERCE REID
Understudy



EUAN MITCHELL
Supernumerary



BRIAN MCKIGEN
Supernumerary



DOUGLAS YANNAGHAS
Supernumerary